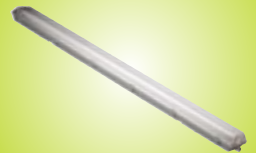
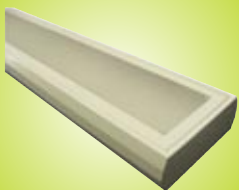
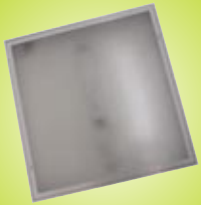


elg

Lampways

**Exclusive Energy
Saving Lighting**

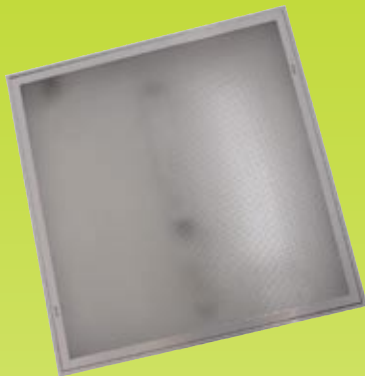


Call or fax our sales hotline on:

T: 0844 991 4400 F:0844 991 4411

E: info@europeanlampgroup.com W: www.europeanlampgroup.com

Polaris Range



*THESE FITTINGS ARE ONLY SUITABLE FOR USE WITH LED TUBES AND NOT FLUORESCENT TUBES.

Specification:

- POLARIS recessed IP54 luminaires are a range of high efficiency luminaires designed to accommodate LED lamps. They are suitable for general lighting in retail and commercial applications.
- Two year guarantee as standard.
- 3 pole terminal block accessed via rear cable entry.
- Fixture supplied with silicon gasket so it remains up to IP54.
- ANTI-UV Acrylic diffuser.
- Ideal for general office use, supermarkets, public buildings and hospitals etc, where energy saving is vital.
- Conforms to CE standards and is 'F' rated so that they can installed on normally flammable surfaces. The product also complies with Rohs.
- Lamp Type: T8 LED TUBE 10w, 18w.

ELG Ref	Description	Size
POL410/OP	POLARIS 600MM LED RECESSED IP54 C/W OPAL DIFFUSER 4X10W LED TUBE	600X600
POL410/PR	POLARIS 600MM LED RECESSED IP54 C/W PRISMATIC DIFFUSER 4X10W LED TUBE	600X600
POL218/OP	POLARIS 600MM LED RECESSED IP54 C/W OPAL DIFFUSER 2X18W LED TUBE	1200X300
POL218/PR	POLARIS 1200MM LED RECESSED IP54 C/W PRISMATIC DIFFUSER 2X18W LED TUBE	1200X300
Replacement Tubes		
159367A	T8 10W 600MM FROSTED NATURAL WHITE TUBE	600
159370A	T8 10W 600MM FROSTED COOL WHITE TUBE	600
159975A	T8 18W 1200MM FROSTED NATURAL WHITE TUBE	1200
159380A	T8 18W 1200MM FROSTED COOL WHITE TUBE	1200

Myzar Range



*THESE FITTINGS ARE ONLY SUITABLE FOR USE WITH LED TUBES AND NOT FLUORESCENT TUBES.

Specification:

- MYZAR range of deluxe surface mounted modulators with a more decorative outlook and designed to accommodate T8 LED tubes.
- Two year guarantee as standard.
- 3 pole terminal block accessed via rear cable entry.
- Low brightness/Category 2 with wishbone springs for a sturdy construction.
- Ideal for general office use, supermarkets, public buildings etc where energy saving is vital.
- Body is manufactured with 0.4mm quality steel, high quality powder coating, with electric-chemical treatment, rust-free for up to 10 years under normal application.
- IP20 and suitable for indoor use only.
- Conform to CE standards and is 'F' rated so that they can installed on normally flammable surfaces. The product also complies with Rohs.
- Lamp Type: T8 LED 24w.

ELG Ref	Description	Size
MYZ224C2	MYZAR 1500MM LED SURFACE C/W CAT2 LOUVRE 2X24W LED TUBE	1500X220
MYZ224OP	MYZAR 1500MM LED SURFACE C/W OPAL DIFFUSER 2X24W LED TUBE	1500X220
MYZ224PR	MYZAR 1500MM LED SURFACE C/W PRISMATIC DIFFUSER 2X24W LED TUBE	1500X220
Replacement Tubes		
159385A	T8 24W 1500MM FROSTED NATURAL WHITE TUBE	1500
159390B	T8 24W 1500MM FROSTED COOL WHITE TUBE	1500

Vega Range



*THESE FITTINGS ARE ONLY SUITABLE FOR USE WITH LED TUBES AND NOT FLUORESCENT TUBES.

Specification:

- VEGA T8 Battens are a range of luminaires designed to accommodate T8 LED lamps. They are suitable for general lighting in factory, super-market, hyper-market, restaurant, hospital etc.
- Two year guarantee as standard.
- 3 pole terminal block accessed via rear cable entry.
- Ideal for general use, indoor.
- BESA box fixings for installation.
- Body is manufactured with 0.4mm quality steel, high quality powder coating, with electric-chemical treatment, rust-free for up to 10 years under normal application.
- Conforms to CE standards and is 'F' rated so that they can installed on normally flammable surfaces. The product also complies with Rohs.
- Lamp Type: 18w, 24w, 30w.

ELG Ref	Description	Size
VEG118	VEGA 4FT 18W LED SINGLE BATTEN	1200
VEG218	VEGA 4FT 2X18W LED TWIN BATTEN	1200
VEG124	VEGA 5FT 24W LED SINGLE BATTEN	1500
VEG224	VEGA 5FT 2X24W LED TWIN BATTEN	1500
VEG130	VEGA 6FT 30W LED SINGLE BATTEN	1800
VEG230	VEGA 6FT 2X30W LED TWIN BATTEN	1800
DIF118 LW	VEGA 4FT SINGLE OPAL DIFFUSER	1200
DIF218 LW	VEGA 4FT TWIN OPAL DIFFUSER	1200
DIF124 LW	VEGA 5FT SINGLE OPAL DIFFUSER	1500
DIF224 LW	VEGA 5FT TWIN OPAL DIFFUSER	1500
Replacement Tubes		
159375A	T8 18W 1200MM FROSTED NATURAL WHITE TUBE	1200
159380A	T8 18W 1200MM FROSTED COOL WHITE TUBE	1200
159385A	T8 24W 1500MM FROSTED NATURAL WHITE TUBE	1500
159390B	T8 24W 1500MM FROSTED COOL WHITE TUBE	1500
159391A	T8 30W 1800MM FROSTED NATURAL WHITE TUBE	1800
159392A	T8 30W 1800MM FROSTED COOL WHITE TUBE	1800

Syrius Range



*THESE FITTINGS ARE ONLY SUITABLE FOR USE WITH LED TUBES AND NOT FLUORESCENT TUBES.

Specification:

- SYRIUS LED T8 IP65 luminaires are a range of luminaires designed to accommodate T8 LED lamps. They are suitable for general lighting in carpark and commercial applications or areas exposed to water.
- Two year guarantee as standard.
- 3 pole fused terminal block accessed via rear cable entry.
- All luminaires are constructed using ABS base and polycarbonate covers.
- Ideal for general use, outdoor lighting, public buildings etc where energy saving is vital.
- IP65 and suitable for outdoor use .
- Conforms to CE standards and is 'F' rated so that they can installed on normally flammable surfaces. The product also complies with Rohs.
- Lamp Type: T8 24w.

ELG Ref	Description	Size
SYRGCP124	SYRIUS 5FT SINGLE 24W IP65 LED POLYCARBONATE FITTING	1500
SYRGCP224	SYRIUS 5FT TWIN 2X24W LED IP65 POLYCARBONATE FITTING	1500
SYRSS/CLIPS	SYRIUS STAINLESS STEEL CLIPS FOR GCP POLY IP65	-
Replacement Tubes		
159385A	T8 24W 1500MM FROSTED NATURAL WHITE TUBE	1500
159390B	T8 24W 1500MM FROSTED COOL WHITE TUBE	1500

Altair Range



Specification:

- ALTAIR recessed T8 luminaires are a range of high efficiency luminaires designed to accommodate LED lamps. They are suitable for general lighting in retail and commercial applications.
- Two year guarantee as standard.
- 3 pole terminal block accessed via rear cable entry.
- ANTI-UV Acrylic diffuser. Available in clear Prismatic or Opal.
- Ideal for general office use, public buildings etc.
- Fixing clips provide can be supplied for mounting into plasterboard ceilings.
- Conforms to CE standards and is 'F' rated so that they can be installed on normally flammable surfaces. The product also complies with Rohs.
- Lamp Type: T8 LED TUBE 10w, 18w.

*THESE FITTINGS ARE ONLY SUITABLE FOR USE WITH LED TUBES AND NOT FLUORESCENT TUBES.

ELG Ref	Description	Size
ALT410C2	ALTAIR 600MM LED RECESSED C/W CAT2 LOUVRE 4x10w LED TUBE	600X600
ALT410SL	ALTAIR 600MM LED RECESSED C/W STANDARD LOUVRE 4x10w LED TUBE	600X600
ALT418C2	ALTAIR 1200MM LED RECESSED C/W CAT2 LOUVRE 4X18W LED TUBE	1200X600
ALT418SL	ALTAIR 1200MM LED RECESSED C/W STANDARD LOUVRE 4X18W LED TUBE	1200X600
ALT410/OPAL	ALTAIR 600MM LED RECESSED C/W OPAL DIFFUSER 4X10W LED TUBE	600X600
ALT410/PR	ALTAIR 600MM LED RECESSED C/W PRISMATIC DIFFUSER 4X10W LED TUBE	600X600
ALT418/OPAL	ALTAIR 1200MM LED RECESSED C/W OPAL DIFFUSER 4X18W LED TUBE	1200X600
ALT418/PR	ALTAIR 1200MM LED RECESSED C/W PRISMATIC DIFFUSER 4X18W LED TUBE	1200X600
ALT218/OP	ALTAIR 1200MM LED RECESSED C/W OPAL DIFFUSER 2X18W LED TUBE	1200X300
ALT218/PR	ALTAIR 1200MM LED RECESSED C/W PRISMATIC DIFFUSER 2X18W LED TUBE	1200X300
Replacement Tubes		
159367A	T8 10W 600MM FROSTED NATURAL WHITE TUBE	600
159370A	T8 10W 600MM FROSTED COOL WHITE TUBE	600
159975A	T8 18W 1200MM FROSTED NATURAL WHITE TUBE	1200
159380A	T8 18W 1200MM FROSTED COOL WHITE TUBE	1200

*** 3 HOUR EMERGENCY PACKS AVAILABLE ON ALL THESE RANGES
PLEASE CALL OUR SALES HOTLINE FOR FURTHER DETAILS.**

European Lamp Group,
European Industrial Park, Unit 2,
Knowles Lane, Bradford BD4 9AB

T: 0844 991 4400 F: 0844 991 4411

E: info@europeanlampgroup.com W: www.europeanlampgroup.com